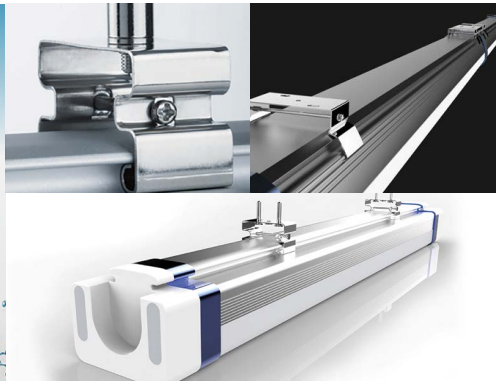
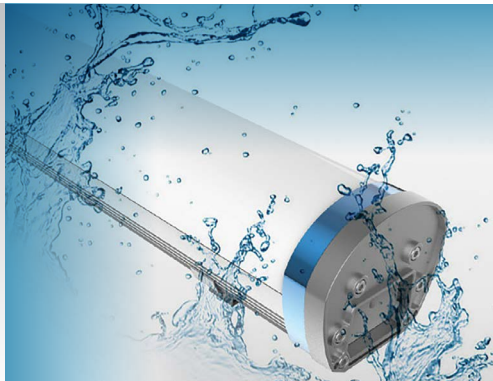
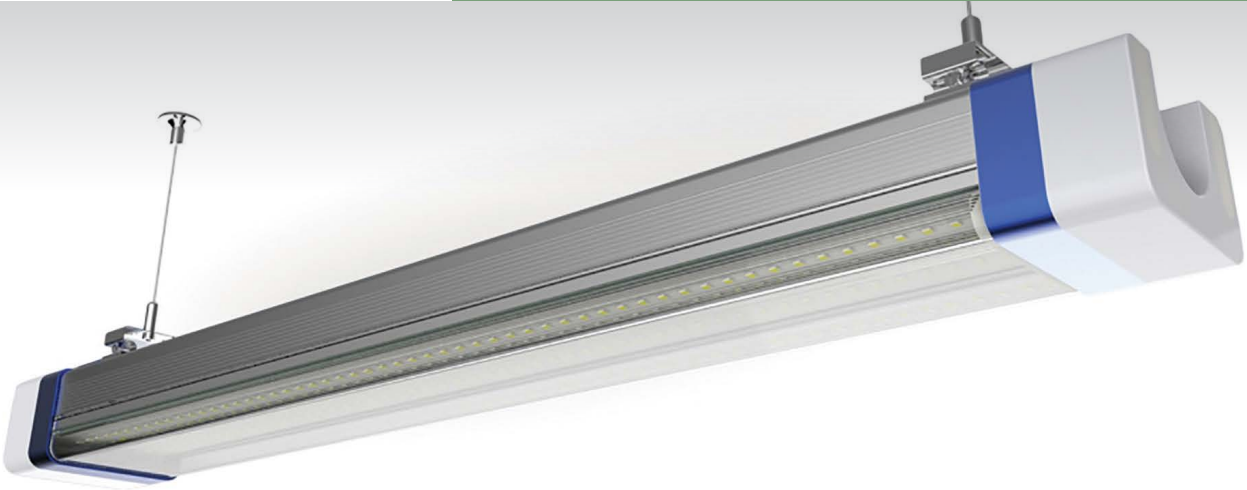


LED Tri-proof



LED Tri-proof



Efficiency



Design



Installation



Reliability

Olivewood Technology, Unit S1, Mendip Business Park,
Mendip Road, Rooks Bridge, Somerset, BS26 2UG

T: +44 (0) 1749 840439

E: info@olivewood.tech

www.olivewood.tech

www.chil-led.com

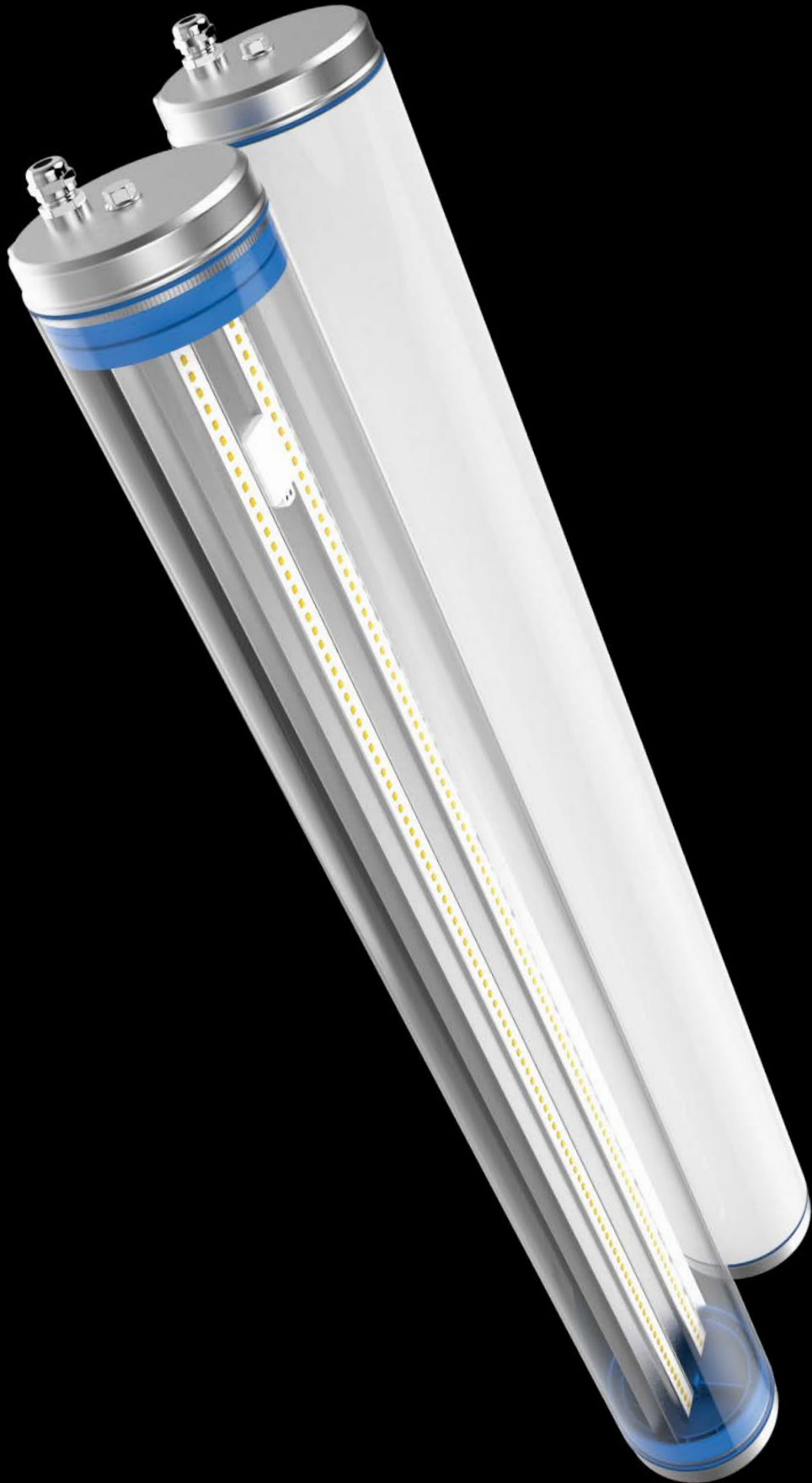
 [@olivewoodtech](https://twitter.com/olivewoodtech)

OLIVEWOOD

Efficiency through Technology

The **Olivewood** range of Tri-Proof LED luminaires provides ideal lighting solutions, not only for commercial, public and home use, but also for use in harsh operating environments. Resistant to damage from dirt and chemicals, physically robust and exceptionally water resistant, our complete Tri-Proof range is suitable for installation in both industrial and exposed exterior locations. The complete range is IP65 waterproof rated and IK08 impact resistance rated at the very least.

Designed to replace fluorescent tube fittings, the **Olivewood** Tri-Proof lighting range can deliver excellent energy savings, as well as reduced maintenance and improved light quality.



LED Tri-proof



Efficiency



Design



Installation



Reliability


Olivewood Technology, Unit S1, Mendip Business Park,
Mendip Road, Rooks Bridge, Somerset, BS26 2UG

T: +44 (0) 1749 840439

E: info@olivewood.tech

www.olivewood.tech

www.chil-led.com

 [@olivewoodtech](https://twitter.com/olivewoodtech)

Countertops

Titan Tri-Proof 4

(Industrial/Commercial – Factories, warehouses, bus stations, train stations, airports, supermarkets etc.)

Titan Heavy Tri-Proof 5

(Industrial/Commercial – Factories, warehouses, bus stations, train stations, airports, supermarkets etc.)

Clean Zone Tri-Proof 6

(Food/Pharmaceutical/Medical – Food manufacturing/processing/preparation areas, refrigeration rooms, cold stores, controlled environments, clean rooms, hospitals, operating rooms etc.)

Clean Zone Plus Tri-Proof 7

(Food/Pharmaceutical/Medical – Food manufacturing/processing/preparation areas, refrigeration rooms, cold stores, controlled environments, clean rooms, hospitals, operating rooms etc.)

Adaptable Tri-Proof 8

(Industrial/Commercial/Home use – Factories, warehouses, bus stations, train stations, airports, carparks, supermarkets, shops, exhibition halls, hotels, offices, schools, corridors etc.)

Resistance Tri-Proof 9

(Industrial/Agricultural/Automotive – Factories, Warehouses, farm/agricultural buildings, mills, mechanics workshops, car washes etc.)

Installation Options 10

Ratings Information 11




Titan Tri-Proof

Titan Tri-Proof

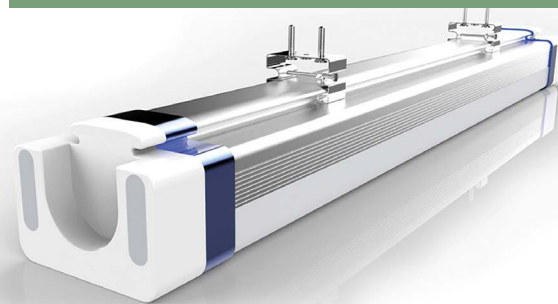
Light Source: 2835
CCT: 4000K
CRI Range: 80/90/95
AC Input: 220-240V
Light Efficiency: 110Lm/W, 140Lm/W
Power Efficiency: >0.87
Beam Angle: 120°
Ratings: IP66 waterproof & IK10 impact resistant
Recommended Installation Height: 3-5M



Optional Functions:

Dimmable 
 Emergency 
 Motion Sensor 

Thanks to its impressive IK10 impact resistance and IP66 waterproof ratings, this robust luminaire is perfect for a wide range of industrial and commercial applications. Highly resistant to liquid, vapour, dust, corrosion and pressure, this Tri-Proof is more than suitable for use in exposed exterior locations as well as harsh and demanding operating environments. This is an ideal lighting solution for small to medium sized areas, with a recommended installation height of between 3-5 meters. Our suggested placements include factories, warehouses, bus and train stations, airports & supermarkets.



Specifications

Model	Power (W)	LED Qty	Lumens	Lm/WH
Titan 2FT	20	108	2200	110
Titan 3FT	30	156	3300	110
Titan 4FT	40	216	4400	110
Titan 5FT	50	264	5500	110
Titan 5FT - A	65	351	7150	110

Dimensions

Model	Length (mm)	Height (mm)	Depth (mm)
Titan 2FT	600	83	63
Titan 3FT	900	83	63
Titan 4FT	1200	83	63
Titan 5FT	1500	83	63
Titan 5FT - A	1500	83	63



Titan Tri-Proof



Efficiency



Design



Installation




Reliability

T: +44 (0) 1749 840439

E: info@olivewood.tech

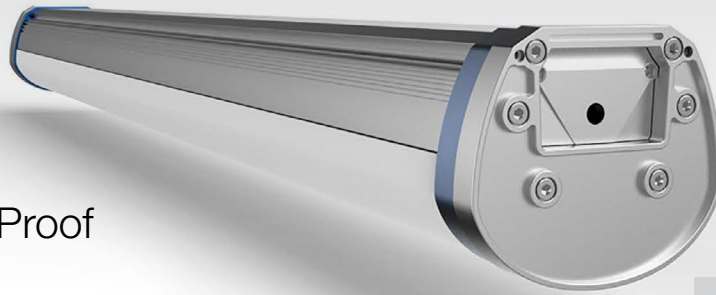
www.olivewood.tech

www.chil-led.com

 @olivewoodtech

Olivewood Technology, Unit S1, Mendip Business Park,
Mendip Road, Rooks Bridge, Somerset, BS26 2UG

Titan Heavy Tri-Proof



Titan Heavy Tri-Proof

Light Source: 2835
CCT: 4000K
CRI Range: 80/90/95
AC Input: 100-240V
Light Efficiency: 120Lm/W, 150Lm/W
Power Efficiency: >0.87
Beam Angle: 140°
Ratings: IP66 waterproof & IK10 impact resistant
Recommended Installation Height: 3-8M

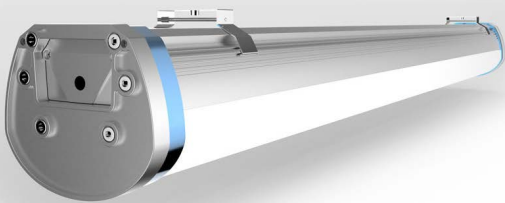
Optional Functions:

Dimmable

Emergency

Motion Sensor

The Titan Heavy Tri-Proof is a heavyweight alternative to our Titan luminaire. This high powered substitute is suitable for all of the same applications but on a larger scale, with more intense operating requirements. With a higher recommended installation height of between 3-8 meters, a wider beam angle and greater light efficiency, this luminaire is perfect for the same industrial and commercial applications as the Titan Tri-Proof within a medium to large operating area.



Specifications

Model	Power (W)	Lumens	Lm/W
Titan Heavy 2FT	40	4800	120
Titan Heavy 3FT	60	7200	120
Titan Heavy 4FT	40	4800	120
Titan Heavy 4FT - A	80	9600	120
Titan Heavy 5FT	50	6000	120
Titan Heavy 5FT - A	100	12000	120

Dimensions

Model	Length (mm)	Height (mm)	Depth (mm)
Titan Heavy 2FT	600	83	109
Titan Heavy 3FT	900	83	109
Titan Heavy 4FT	1200	83	109
Titan Heavy 4FT - A	1200	83	109
Titan Heavy 5FT	1500	83	109
Titan Heavy 5FT - A	1500	83	109



Titan Heavy Tri-Proof



Efficiency



Design



Installation



Reliability

T: +44 (0) 1749 840439

E: info@olivewood.tech

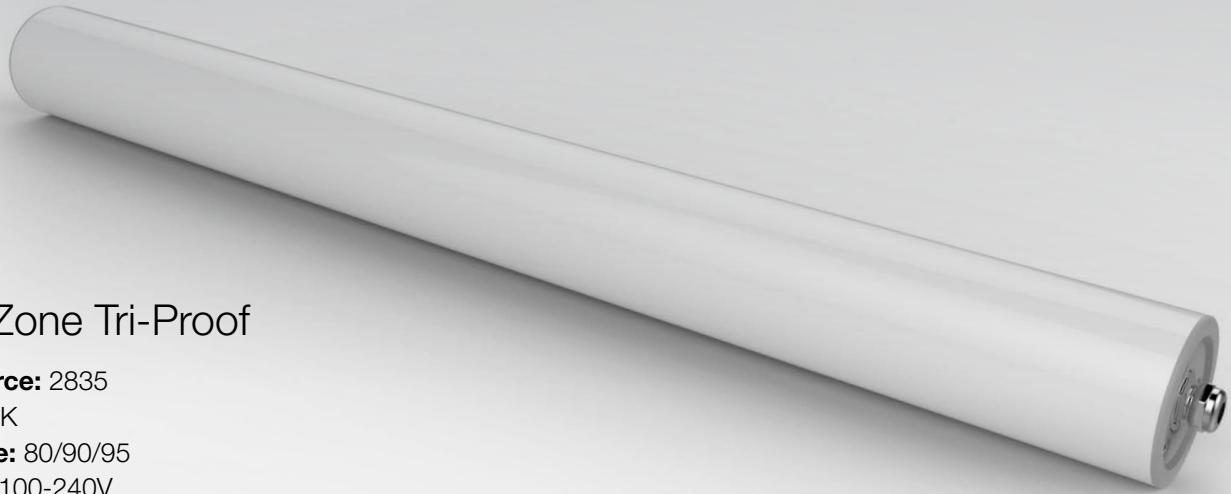
www.olivewood.tech

www.chil-led.com

@olivewoodtech

Olivewood Technology, Unit S1, Mendip Business Park,
Mendip Road, Rooks Bridge, Somerset, BS26 2UG

Clean Zone Tri-Proof



Clean Zone Tri-Proof

- Light Source:** 2835
- CCT:** 4000K
- CRI Range:** 80/90/95
- AC Input:** 100-240V
- Light Efficiency:** 130Lm/W, 160Lm/W
- Power Efficiency:** >0.87
- Beam Angle:** 120°
- Ratings:** IP67 waterproof & IK08 impact resistant
- Recommended Installation Height:** 2-4M

The Surgical Tri-Proof luminaire is specifically designed to be a hygienic lighting solution. Its cylindrical design works to prevent dust and grime from settling on its surface. Its IP67 waterproof rating indicates exceptional resistance to liquids, vapour, dust, pollutants, contaminants and corrosive substances. These characteristics help to keep its operating environment sanitary, making it a perfect choice for the food, medical and pharmaceutical industries. Our suggested applications include food manufacturing and processing areas, food preparation spaces, cold stores, refrigeration rooms, hospitals, operating rooms, controlled environments and clean rooms. The recommended installation height for this product is 2-4 meters.

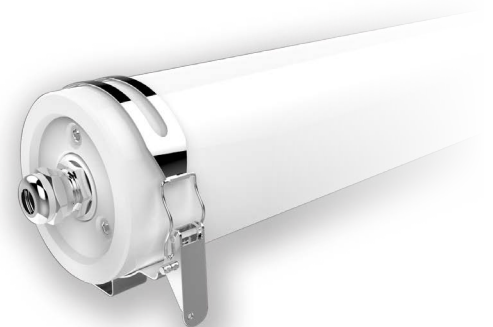


Specifications

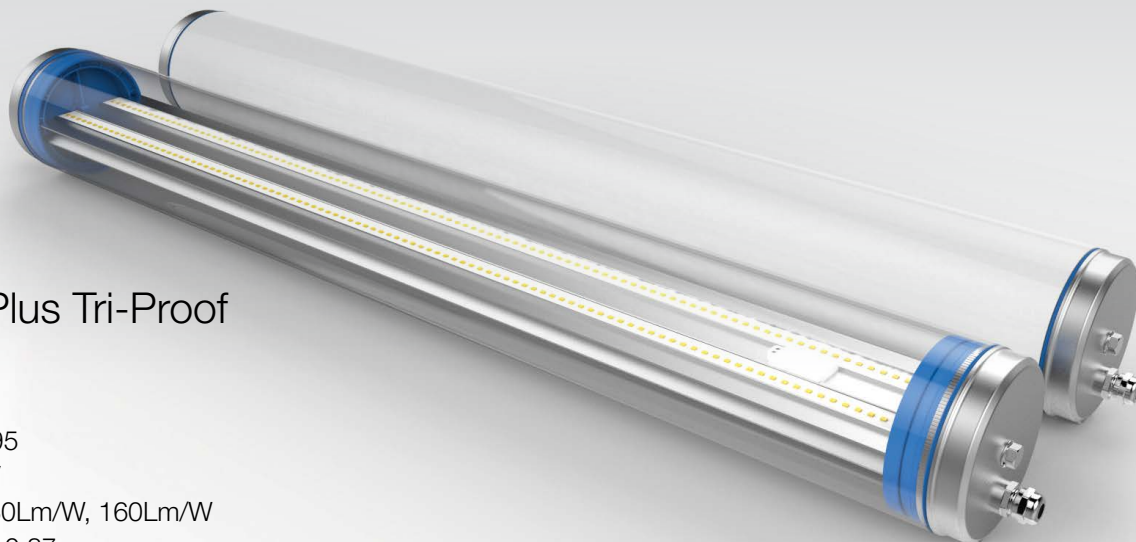
Model	Power (W)	Lumens	Lm/W
Clean Zone 2FT	20	2600	130
Clean Zone 4FT	36	4680	130
Clean Zone 5FT	48	6240	130

Dimensions

Model	Length (mm)	Height (mm)	Depth (mm)
Clean Zone 2FT	600	70	70
Clean Zone 4FT	1200	70	70
Clean Zone 5FT	1500	70	70



Clean Zone Plus Tri-Proof



Clean Zone Plus Tri-Proof

- Light Source:** 2835
- CCT:** 4000K
- CRI Range:** 80/90/95
- AC Input:** 100-240V
- Light Efficiency:** 130Lm/W, 160Lm/W
- Power Efficiency:** >0.87
- Beam Angle:** 120°
- Ratings:** IP67 waterproof & IK08 impact resistant
- Recommended Installation Height:** 2-8M

The Surgical Plus Tri-Proof is a high powered alternative to our Surgical luminaire. This substitute offers exactly the same hygiene and cleanliness benefits as the standard Surgical Tri-Proof, making it ideal for all of the same applications, but in addition, offers greater power output for an ultra-bright lighting solution. Combining this extra power output with a higher recommended installation height of between 2-8 meters makes this luminaire more suitable for larger areas than the standard Surgical luminaire.



Specifications

Model	Power (W)	Lumens	Lm/W
Clean Zone Plus 2FT	20	2600	130
Clean Zone Plus 4FT	40	5200	130
Clean Zone Plus 4FT -A	50	6500	130
Clean Zone Plus 5FT	50	6500	130
Clean Zone Plus 5FT -A	60	7800	130

Dimensions

Model	Length (mm)	Height (mm)	Depth (mm)
Clean Zone Plus 2FT	600	70	70
Clean Zone Plus 4FT	1200	70	70
Clean Zone Plus 4FT -A	1200	70	70
Clean Zone Plus 5FT	1500	70	70
Clean Zone Plus 5FT -A	1500	70	70



Clean Zone Plus
Tri-Proof



Efficiency



Design



Installation



Reliability

Olivewood Technology, Unit S1, Mendip Business Park,
Mendip Road, Rooks Bridge, Somerset, BS26 2UG

T: +44 (0) 1749 840439

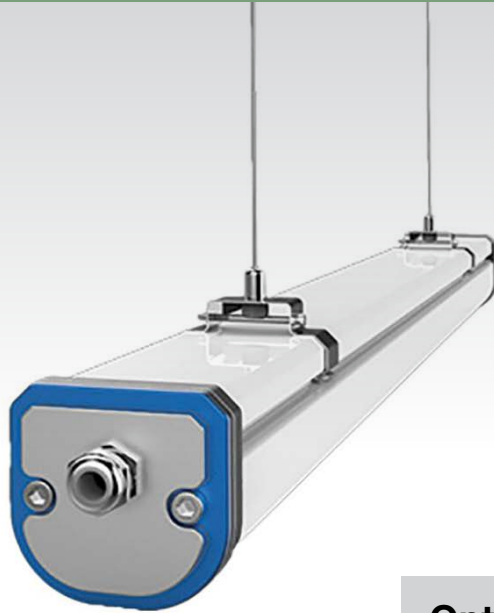
E: info@olivewood.tech

www.olivewood.tech

www.chil-led.com

[@olivewoodtech](https://twitter.com/olivewoodtech)

Adaptive Tri-Proof



Adaptive Tri-Proof

Light Source: 2835
CCT: 4000K
CRI Range: 80/90/95
AC Input: 220-240V
Light Efficiency: 120Lm/W, 150Lm/W
Power Efficiency: >0.87
Beam Angle: 120°
Ratings: IP65 waterproof & IK08 impact resistant
Recommended Installation Height: 2-6M

Optional Functions:

Dimmable



The Adaptive Tri-Proof is a fantastic all-round LED lighting solution. Low cost without compromising excellent quality and high performance, this luminaire has endless potential applications. Its elegant design and ambient colour temperature makes it suitable for offices, schools, corridors, shops, exhibition halls, hotels, train and bus stations, airports and many more commercial and even home use applications. IP65 waterproof and IK08 impact ratings also make the Adaptive Tri-Proof ideal for low intensity industrial applications as well as installation in exterior locations. These additional applications may include warehouse and factory lighting, car park lighting and general exterior lighting.

Specifications

Model	Power (W)	Lumens	Lm/W
Adaptive 2FT	20	2400	120
Adaptive 3FT	25	3000	120
Adaptive 4FT	30	3600	120
Adaptive 5FT	35	4200	120



Dimensions

Model	Length (mm)	Height (mm)	Depth (mm)
Adaptive 2FT	600	55	55
Adaptive 3FT	900	55	55
Adaptive 4FT	1200	55	55
Adaptive 5FT	1500	55	55



Adaptive Tri-Proof



Efficiency



Design



Installation



Reliability

T: +44 (0) 1749 840439

E: info@olivewood.tech

www.olivewood.tech

www.chil-led.com

@olivewoodtech

Olivewood Technology, Unit S1, Mendip Business Park,
Mendip Road, Rooks Bridge, Somerset, BS26 2UG

Resistance Tri-Proof

Resistance Tri-Proof

Light Source: 2835
CCT: 4000K
CRI Range: 80/90/95
AC Input: 220-240V
Light Efficiency: 110Lm/W, 140Lm/W
Power Efficiency: >0.87
Beam Angle: 120°
Ratings: IP65 waterproof & IK08 impact resistant
Recommended Installation Height: 2-6M

The Resistance Tri-Proof is designed for use in extremely harsh operating environments. With its IP65 waterproof rating, this luminaire is highly resistant to liquids, vapour, dust, pollutants and oils, as well as acidic and alkali substances and other corrosive and abrasive materials. The Resistance luminaire also has a good IK08 impact rating. These attributes make this robust and highly durable Tri-Proof the perfect lighting solution for the agricultural and automotive industries in particular, with suggested installation in farm and agricultural buildings, mills, mechanics workshops and car washes. It may also be used for many of the same industrial applications as the Titan and Titan Heavy luminaires as a low cost, hardwearing alternative.

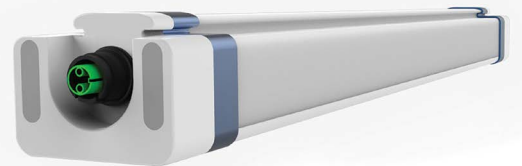


Specifications

Model	Power (W)	Lumens	Lm/W
Resistance 2FT	20	2200	110
Resistance 3FT	30	3300	110
Resistance 4FT	40	4400	110
Resistance 5FT	50	5500	110

Dimensions

Model	Length (mm)	Height (mm)	Depth (mm)
Resistance 2FT	600	63	83
Resistance 3FT	900	63	83
Resistance 4FT	1200	63	83
Resistance 5FT	1500	63	83



Resistance Tri-Proof



Efficiency



Design



Installation



Reliability

Olivewood Technology, Unit S1, Mendip Business Park,
Mendip Road, Rooks Bridge, Somerset, BS26 2UG

T: +44 (0) 1749 840439

E: info@olivewood.tech

www.olivewood.tech

www.chil-led.com

[@olivewoodtech](https://twitter.com/olivewoodtech)

Installation Options

Installation Options

The simplest and most common way to install our linear Tri-Proof luminaires is to either ceiling mount or suspend them. We can provide a whole range of installation accessories to help achieve the desired installation.

Some of these installation accessories include:

Ceiling Clips – For Standard ceiling mounting

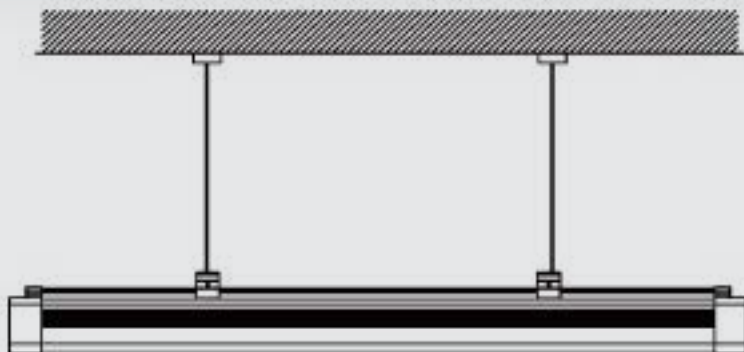
Suspending Steel – For secure suspension

Sling Brackets – For a sliding ceiling mount

Wall Clips – For standard or angled wall mounting

Linkable Brackets & Connectors – For linked, continuous lighting

A. Suspended



B. Ceiling Mounted



For more information on these installation accessories and installation options, please visit our website www.olivewoodtech.co.uk or call **01749 840 439**



Efficiency



Design



Installation



Reliability


Olivewood Technology, Unit S1, Mendip Business Park,
Mendip Road, Rooks Bridge, Somerset, BS26 2UG

T: +44 (0) 1749 840439

E: info@olivewood.tech

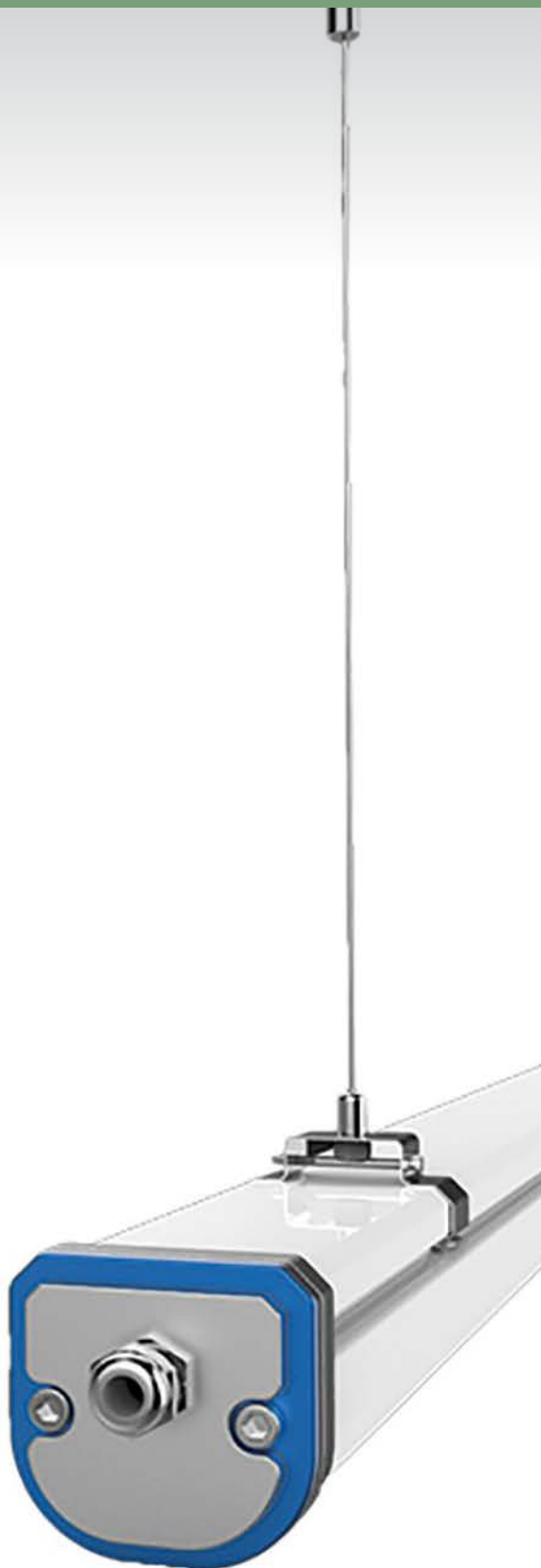
www.olivewood.tech

www.chil-led.com

 [@olivewoodtech](https://twitter.com/olivewoodtech)

IP & IK Ratings

Tri-Proofs



IP Rating

The IP (Ingress Protection) rating refers to the level of protection the fitting has against both solids and liquids. The rating begins with IP and is followed by two digits.

The first digit in the IP rating refers to the fitting's protection against solid material, such as dust, dirt or other substances. The second digit refers to the fitting's protection against liquids.

The digits in the rating range between 0-6 on the first digit and 0-8 on the second. The higher the digits, the better protected the fitting is. A fitting with an IP68 rating is both dust proof and extremely water tight.

Every luminaire in our linear LED Tri-Proof range has an IP rating of at least IP65 or higher, meaning that it is completely dust proof and protected against powerful waterjets or even full immersion into water.

IK Rating

The IK (Impact Protection) rating refers to the level of protection the fitting has against impacts and physical shocks.

The IK rating ranges between IK00-IK10, and again, the higher the digits, the better protected the fitting is.

Every luminaire in our linear LED Tri-Proof range has an IK rating of at least IK08 or higher, meaning that it is protected against a 5 joules impact at the very least. Some of our Tri-Proofs can withstand an impact of 20 joules, which is the equivalent to a 5kg mass dropped from a height of 400mm.

For further information on these ratings, including a full descriptive breakdown of each individual rating, please visit our website.



Efficiency



Design



Installation



Reliability


Olivewood Technology, Unit S1, Mendip Business Park,
Mendip Road, Rooks Bridge, Somerset, BS26 2UG

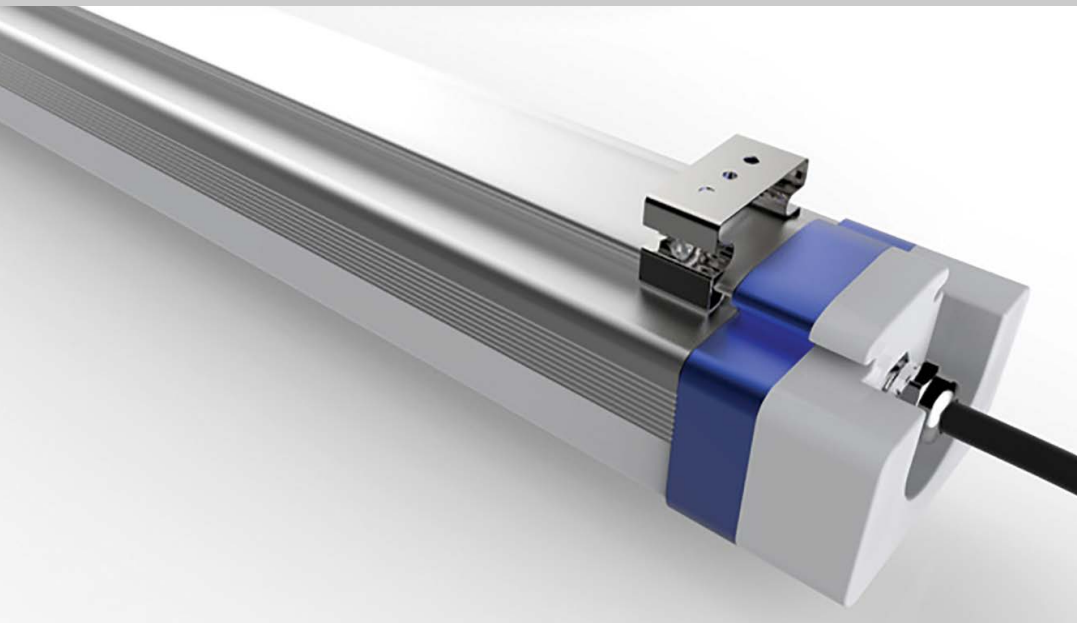
T: +44 (0) 1749 840439

E: info@olivewood.tech

www.olivewood.tech

www.chil-led.com

 [@olivewoodtech](https://twitter.com/olivewoodtech)



Attention

This specification is for reference only. We reserve the right to change without notice. If you need the updated info, please contact local distributors or visit our website at www.olivewoodtech.co.uk



Efficiency



Design



Installation



Reliability